


Unclogging the Particle Reservoir Line

The particle reservoir line on the KinExA® Instrument is used to bring beads into the flow cell and can sometimes clog. In order to remove most clogs from the particle reservoir line follow the instructions below.

How to Unclog the Particle Reservoir Line

1. Attach an empty bead vial to the instrument.
2. Hit the Backflush  button. Push the black circle on the particle Reservoir Pinch Valve and pinch the top portion of the Waste line (**Figure 1**). This allows liquid to be pushed

backwards through the Particle Reservoir line for one full Backflush cycle.

3. Remove your fingers from the Waste line and the Particle Reservoir pinch valve.
4. Remove the bead vial from the instrument, which is now ready to be used.

Note: If the line is still clogged please call Sapidyne to talk with a representative.

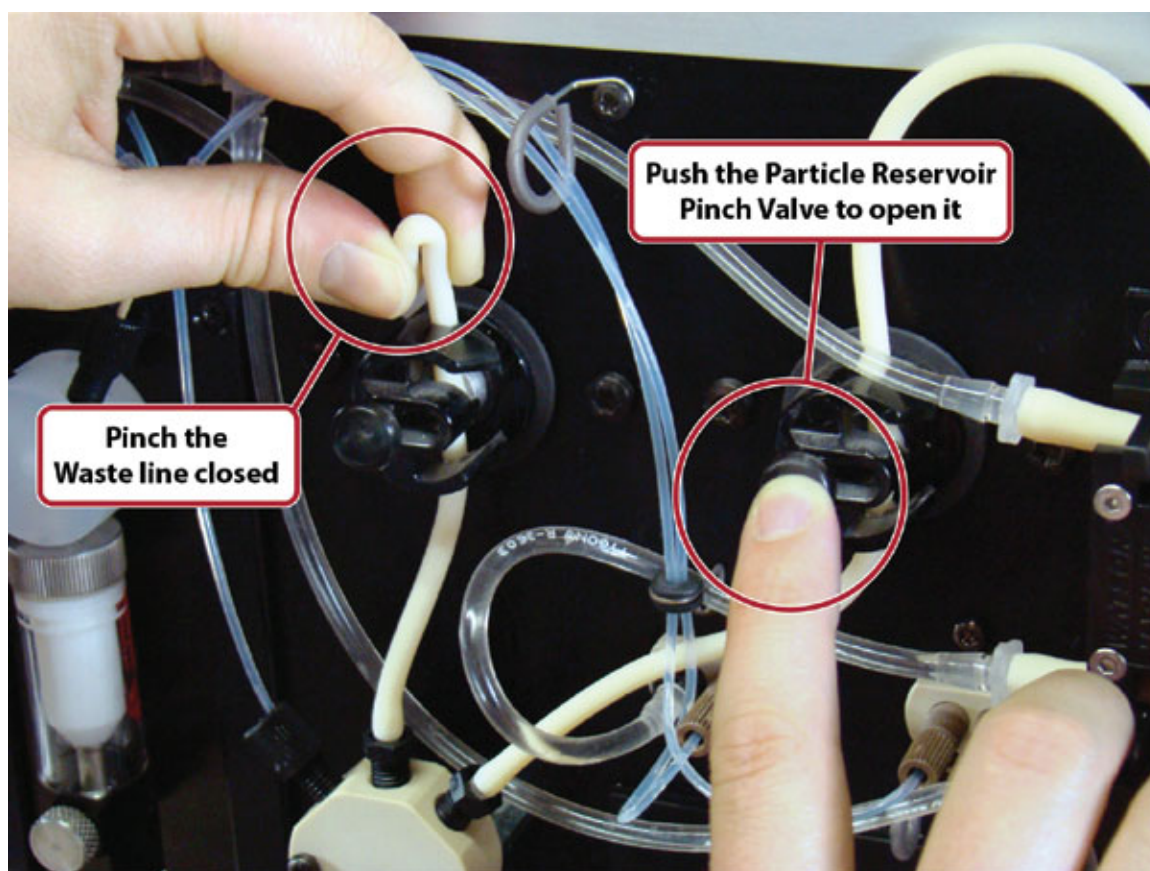


Figure 1. Opening the particle reservoir pinch valve and pinching the waste line to clear the particle reservoir line.