

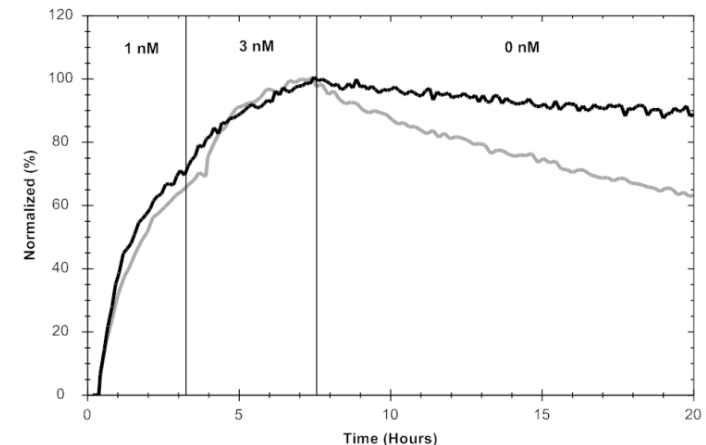
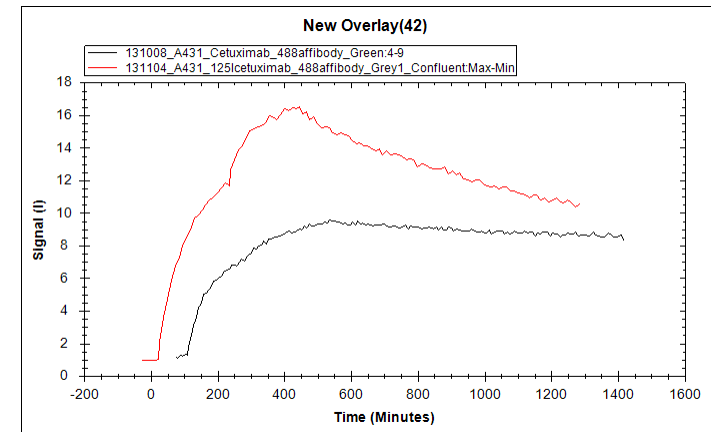


Improve interpretation with  
TraceDrawer:  
How to create figures for publication

[www.tracedrawer.com](http://www.tracedrawer.com)

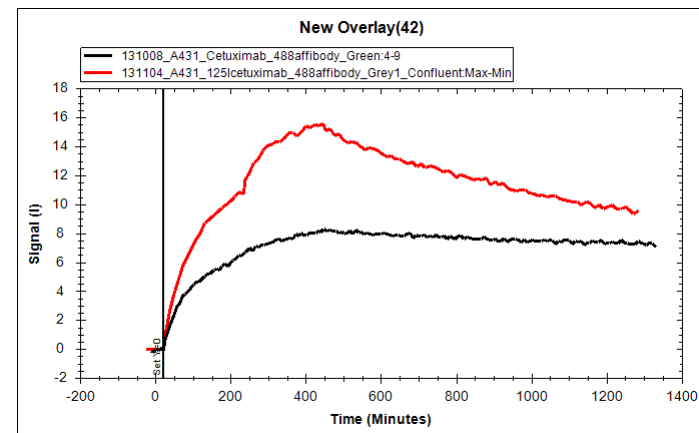
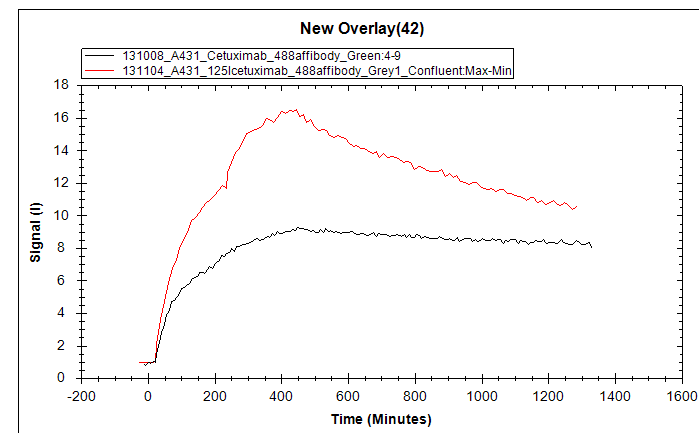
# Create high-quality graphs for publication

- How to go from...
  - Unstructured
  - Low-res
  - Difficult to interpret
- ...to
  - Structured
  - High-quality/ publishable
  - Altered to facilitate interpretation



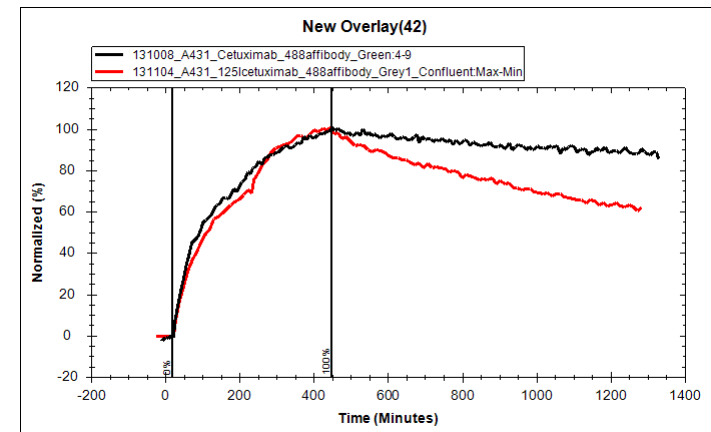
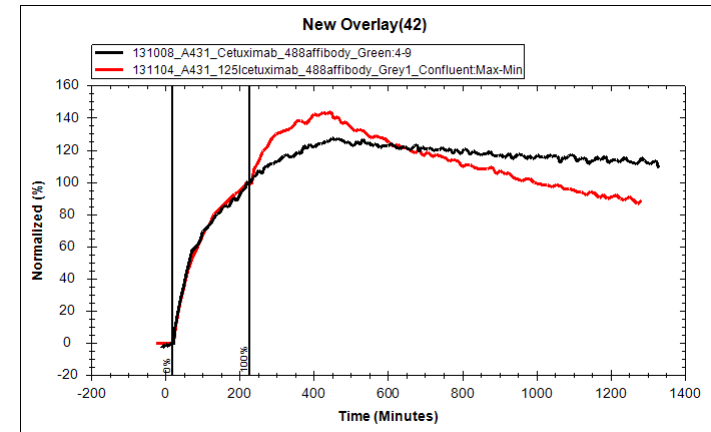
# Move curves

- Align start of association
  - Curve move (Modification tab)
- Set signal of association start to 0
  - Curve offset (Modification tab)



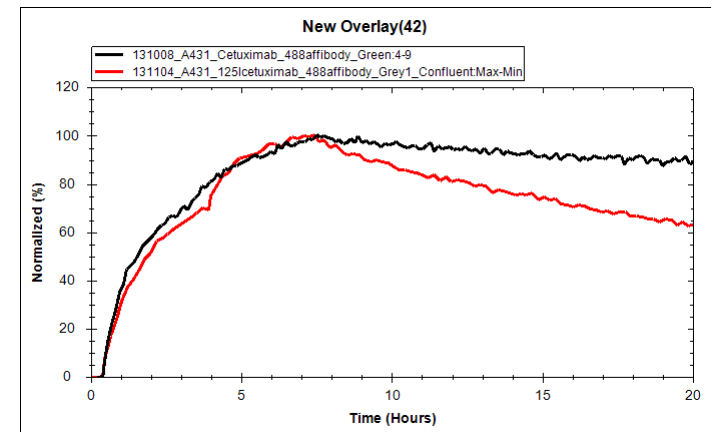
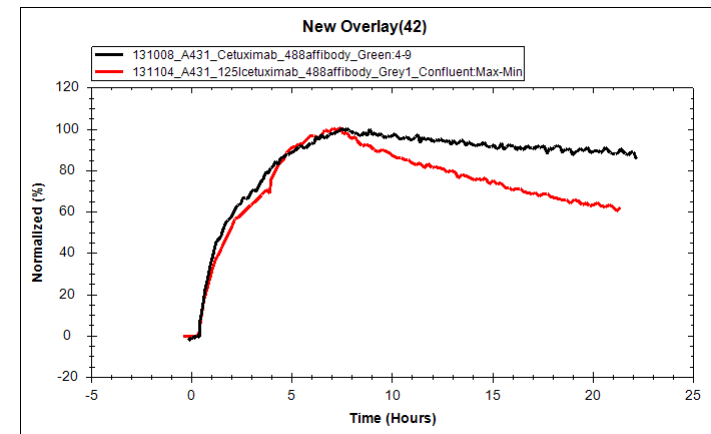
# Normalization

- Optional: Normalize curves (Scaling tab)
  - Set 100 % to e.g. end of first association phase, or before dissociation
  - Goal: Should improve data interpretation



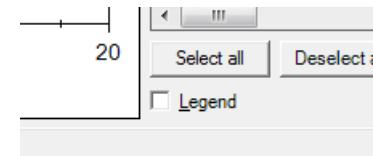
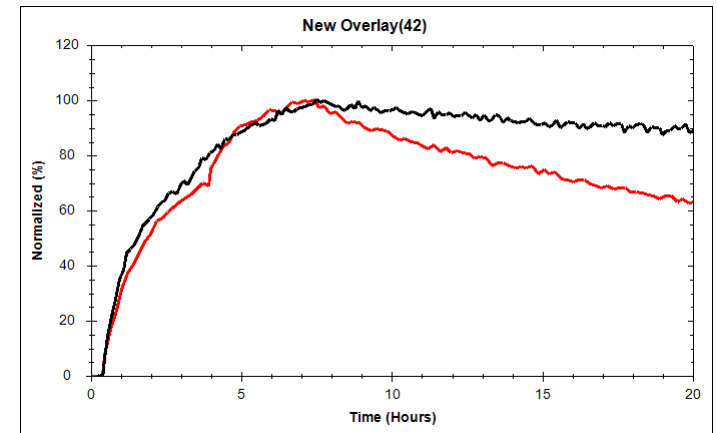
# Change scale and axis

- Choose a relevant time scale (Appearance tab),
  - Hours if measurement was > 3 h.
- Axis settings (right-click on/outside the axis)
  - Suggestion: Start (x,y) at (0,0)
  - Choose settings to present all relevant data, but not more (avoid large graph spaces without data)



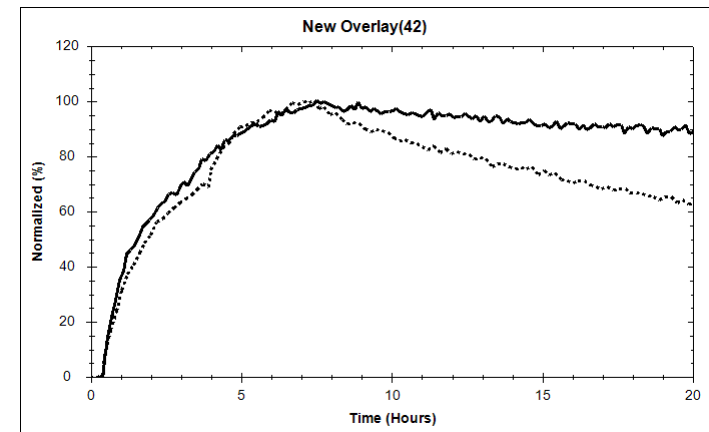
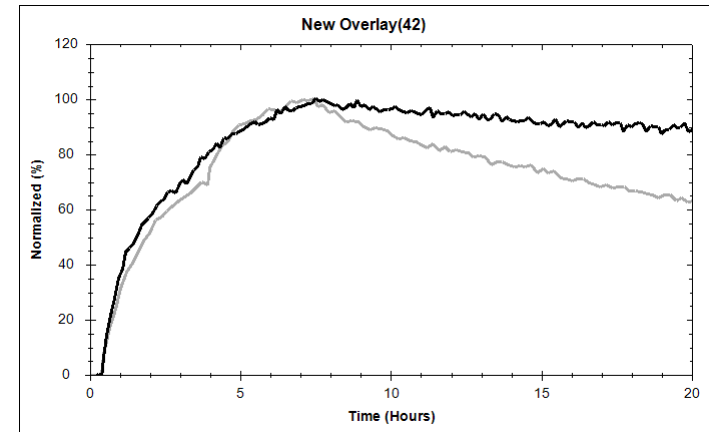
# Simplify

- Hide the legend
  - Include all curve info in the manuscript instead



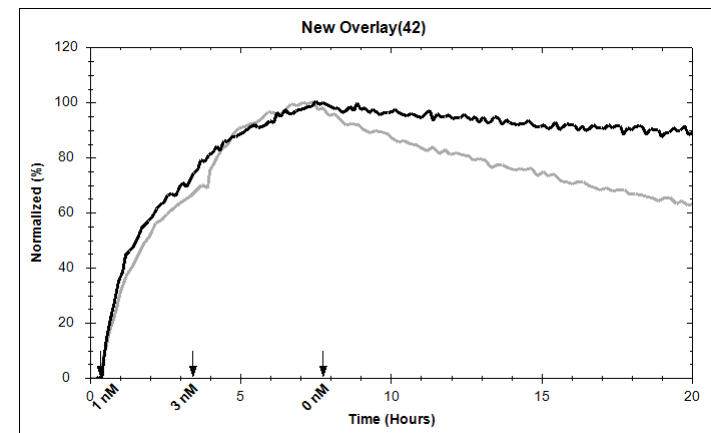
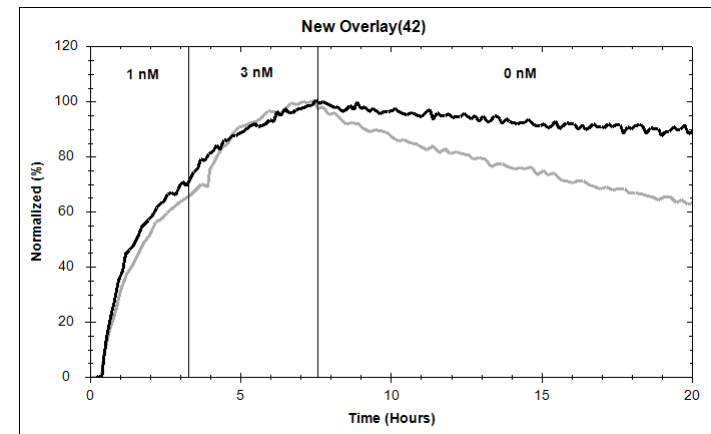
# Change color and/or line type

- If the graph is to be printed in greyscale:
  - Grey and black curves or black curves with different line type
  - Choose a line width that is clear in print
  - All changes can be done in Appearance tab: Curve colors: More



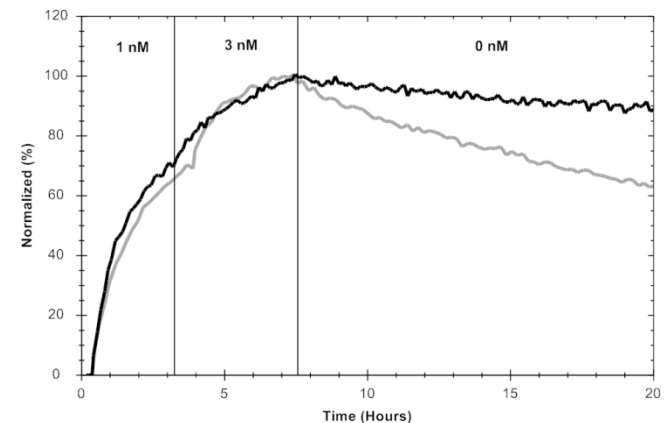
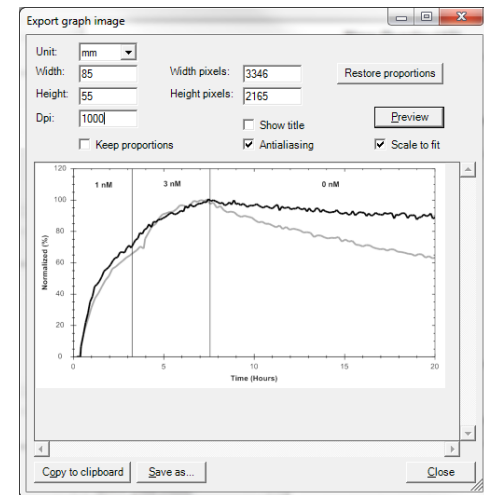
# Add curve info in graph

- Optional:
  - Add information about the measurement
  - Alternative to picture editing softwares
  - Right-click in graph:
    - Add line/arrow
    - Add text boxes (in graph or on axis)



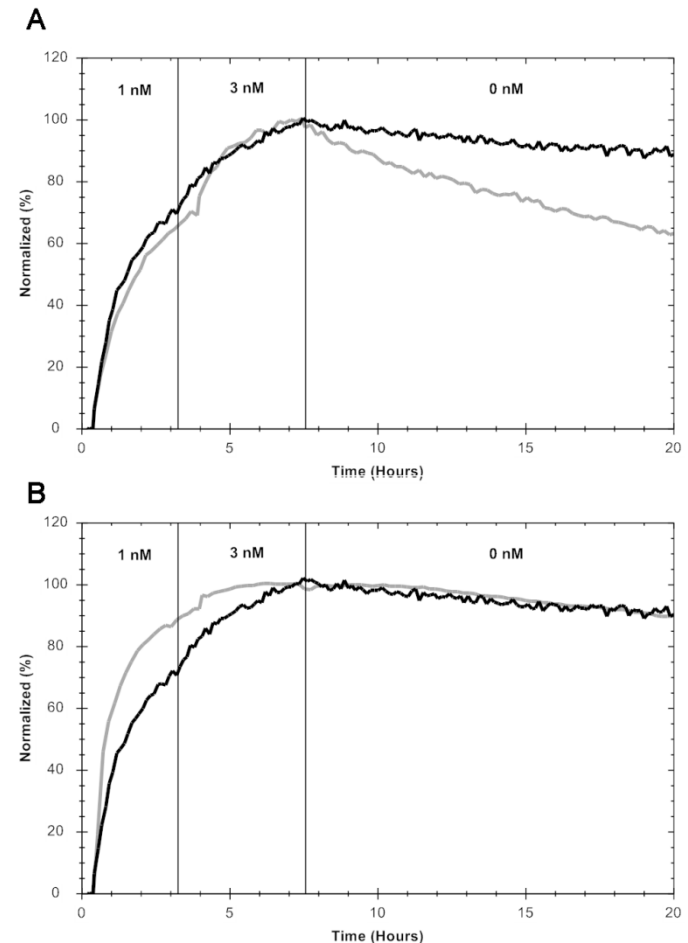
# Export graph

- Copying a graph creates a low-res bmp file – not acceptable for publishing
- Instead:
  - File: Export graph
  - Choose resolution based on journal requirements for line art figures (300-1200 dpi)
  - Un-tick "Show title"
  - One column figures:
    - 80-85 mm in width
  - Choose file format when saving, based on requirements
    - TIF/TIFF often the best




# Add as a panel in a larger figure

- In a picture editing software:
  - Create a blank workspace, the same resolution as your graphs
    - Width: 100-120 % of the width of the graph, if graphs in a column
    - Height: 100-120 % of the height of the graph, if graphs in a row
  - Add graphs
  - Add panel info (A, B...)



# Additional tips

- To improve comparison/interpretation:
  - Use the same time scale for all graphs in the same figure
  - Try to use the same axis settings for all graphs in the same figure
  - Combine different shades of grey with different line types to create variation in graphs with many curves



For more information about TraceDrawer,  
please visit  
[www.tracedrawer.com](http://www.tracedrawer.com)