



Technical Note 204

DS-11 Series Android Email Setup

Introduction

Each DeNovix DS-11 Series instrument has software that allows users to export and send data via email. This document will explain how to set up and manage email accounts on DeNovix Android-based instruments.

Email

Screen captures and data .csv files may be exported via email for instruments with WiFi or Ethernet connectivity.

It is recommended that a free, dedicated POP3 Gmail account be used for outgoing email from the DS-11. This type of account works well with the instrument's operating system and prevents personal incoming email from being stored on the unit.

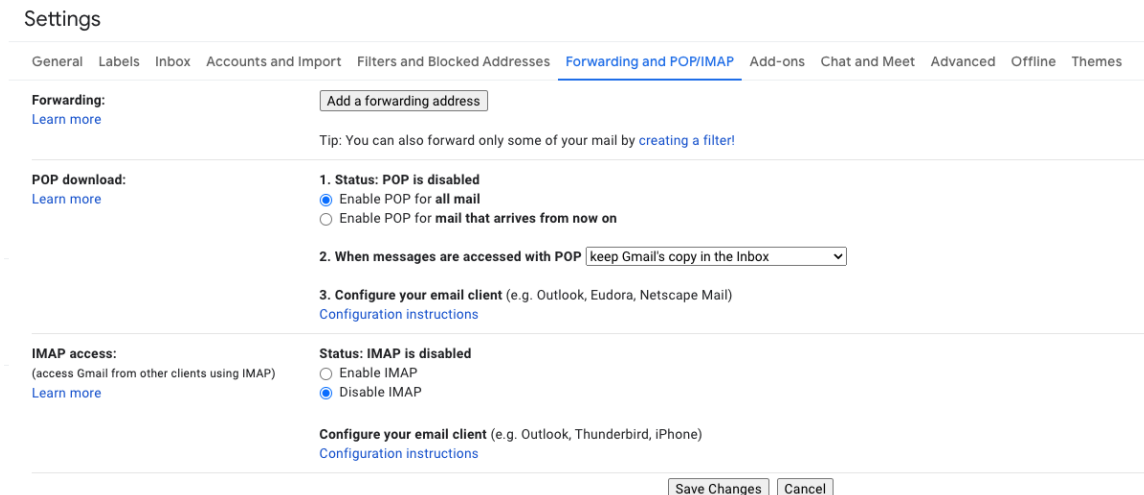
Email Setup

1. Create a new Email account to use with the instrument. Have the account server settings ready to reference during set up on the instrument.
2. Ensure that the instrument is connected to Wi-Fi or Ethernet by checking the Settings App.
3. Swipe the Home screen to the left to navigate to the second page, launch the Email app and follow the prompts using the Manual setup option.
4. Input Incoming Server Information: select the POP3 option on the Account Types screen. Do not use an IMAP account, as messages from IMAP accounts could occupy a significant amount of the instrument's memory.
Note: You may need to set the account to disable IMAP and enable POP3.
5. Set the inbox checking frequency to Never on the Account Options screen. The DS-11 email should be used only to export data and screen captures.
6. Input Outgoing Server Information: use settings appropriate for the lab server.
7. Enter a name to display on outgoing messages.

Configure Gmail Account Settings

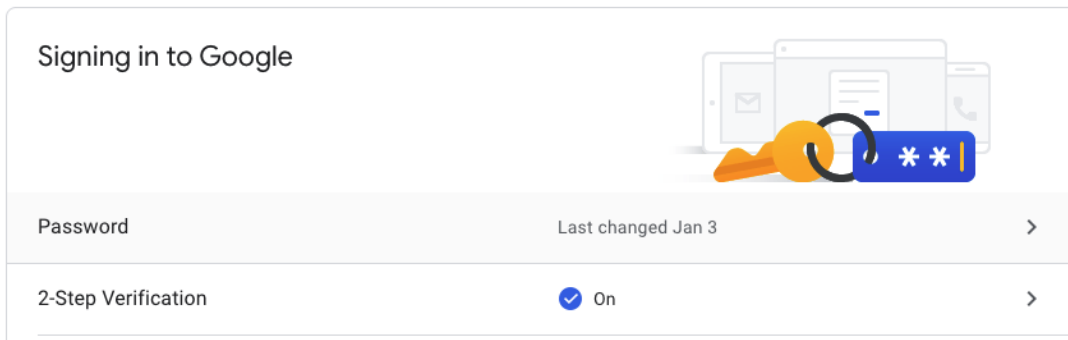
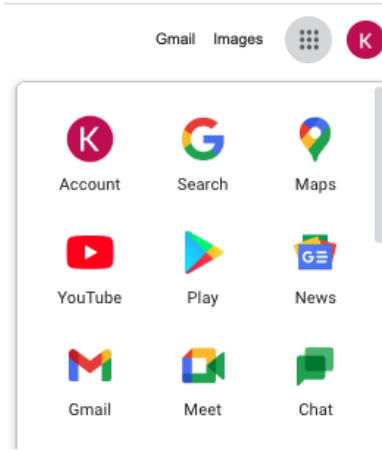
The screen captures below show a step-by-step guide to setting up the Email app with a Gmail account. These settings minimize attempts to connect to Gmail to download mail, synch servers, etc. and keep the device focused on outbound email delivery.

1. Create a new Gmail account. From a computer, open the Gmail app and access the Settings. Enable POP and Disable IMAP.

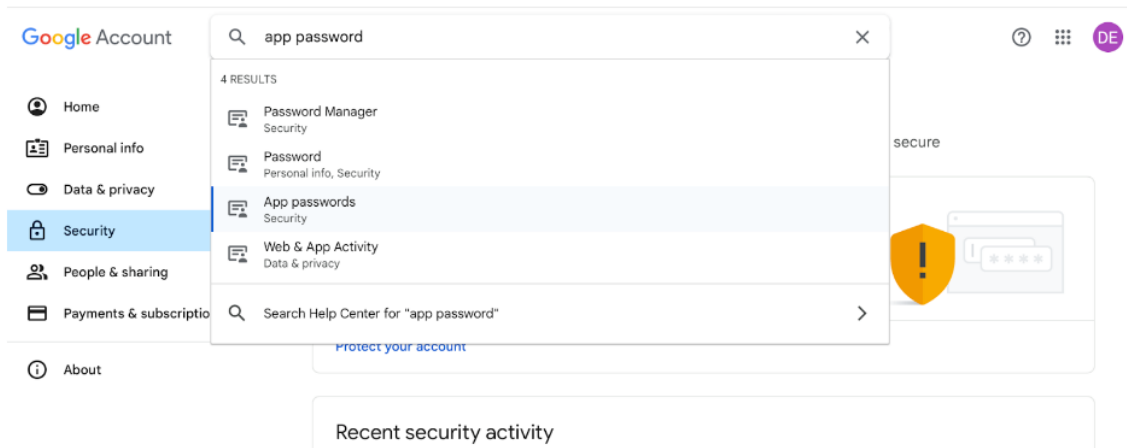


2. In the top right corner of the Gmail app or in a new Google browser window, open up the google apps selector. Click on "Account."

3. From the left nav bar, select "Security".
4. Under "Signing in to Google", Click '2-Step Verification'.
5. Enter a phone number to associate with the account. Follow the on screen instructions to send, receive and enter a verification code.
6. Activate "2-Step Verification" and turn it on.



7. After activating "2-step Verification," go back to the security tab and search "app password" in the Google Account search bar.



8. On the app password page, enter the device name and click create. If you plan to use the same email for all DeNovix devices, enter "DeNovix" as the App name.

← App passwords

App passwords help you sign into your Google Account on older apps and services that don't support modern security standards.

App passwords are less secure than using up-to-date apps and services that use modern security standards. Before you create an app password, you should check to see if your app needs this in order to sign in.

[Learn more](#)

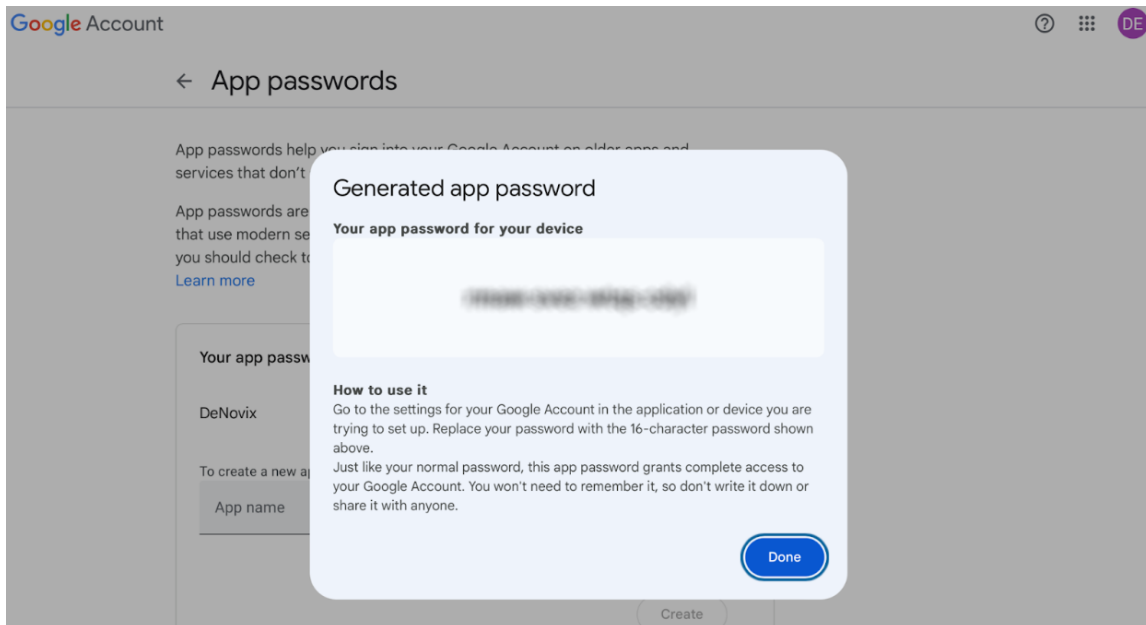
You don't have any app passwords.

To create a new app specific password, type a name for it below...

App name
DeNovix

Create

9. A pop up dialog box with a 16-character app password will be displayed. Copy the password accurately as you will not be able to access it once closed.



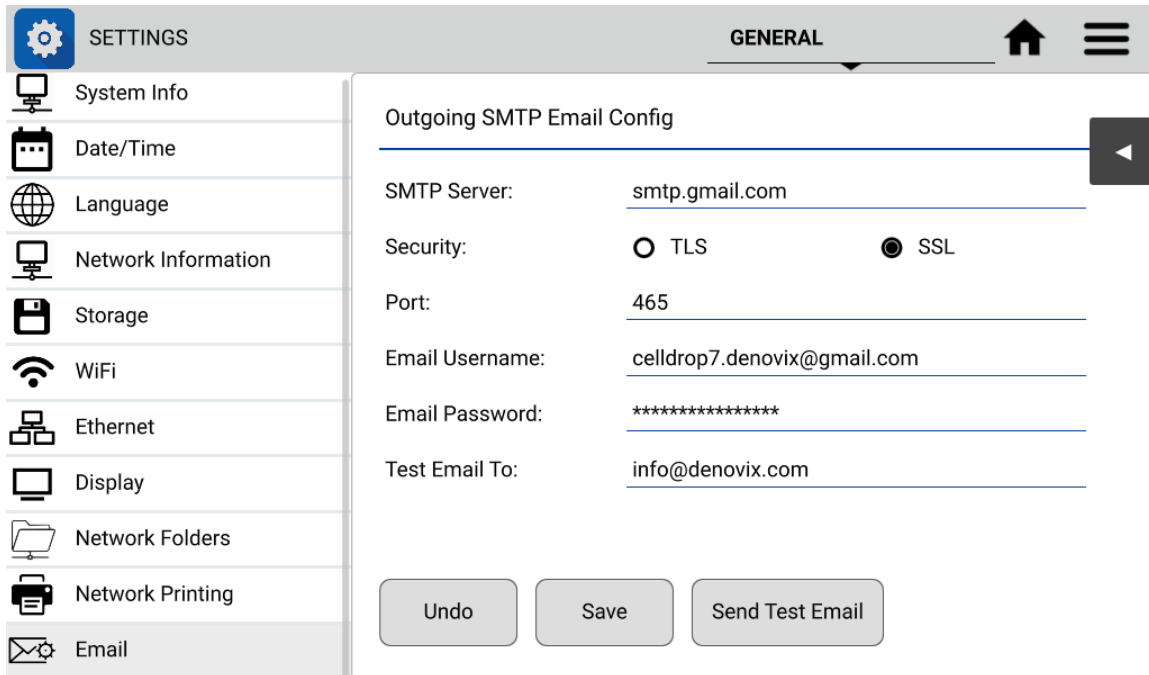
10. The new password is now active for this device and shows up on the list of authorized devices.

Your app passwords	
DeNovix	Created on May 17, last used on May 20

11. In the Settings app / E-mail Tab you will use the gmail account email address and the new 16 character password when setting up the email account.

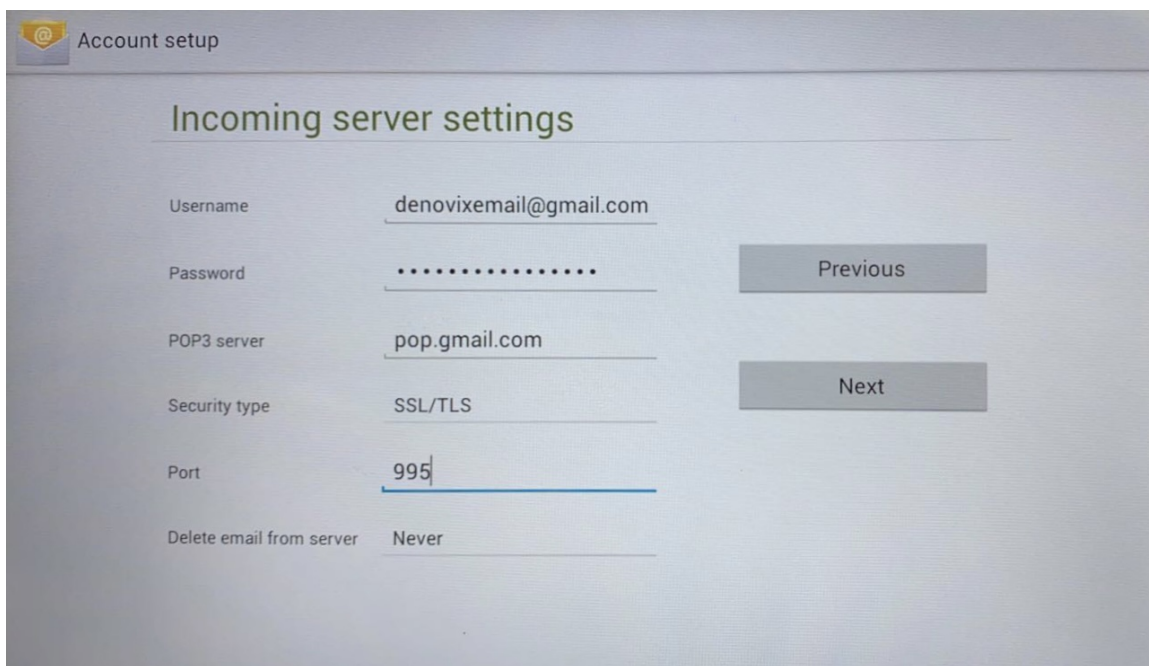
SMTP Server: smtp.gmail.com
Security: SSL
Port: 465
Email: Gmail account full email address
Email password: 16 character generated password.
Enter a "Test Email To" address.
Click Save.

12. Click "Send Test Email" to verify the set up.

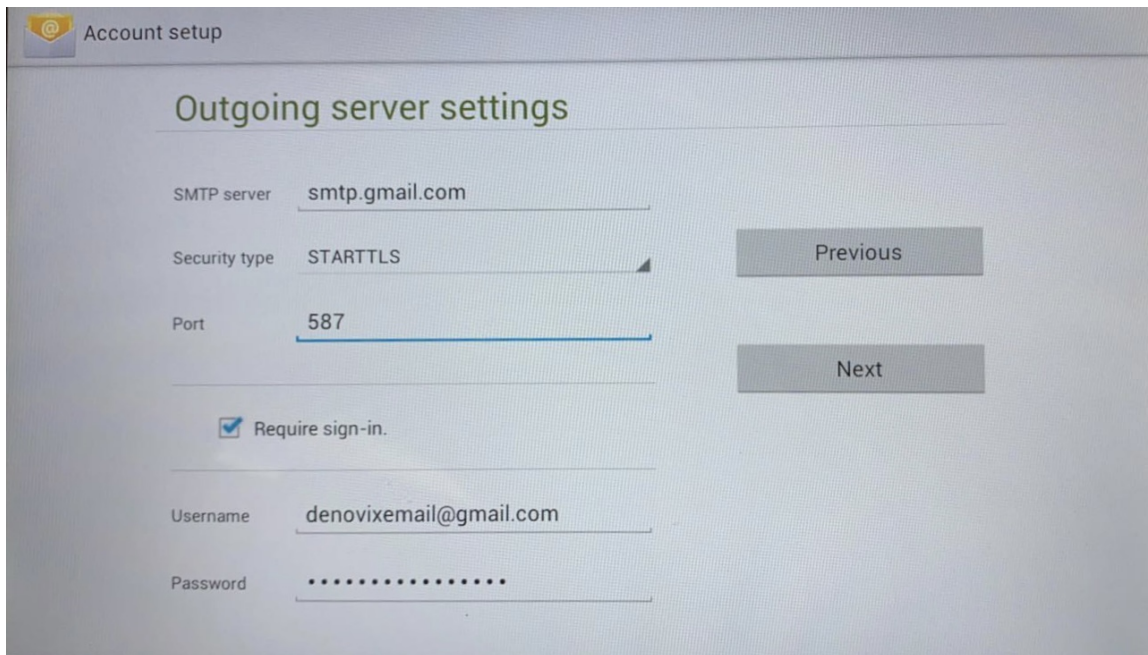


Set Up Email on Instrument

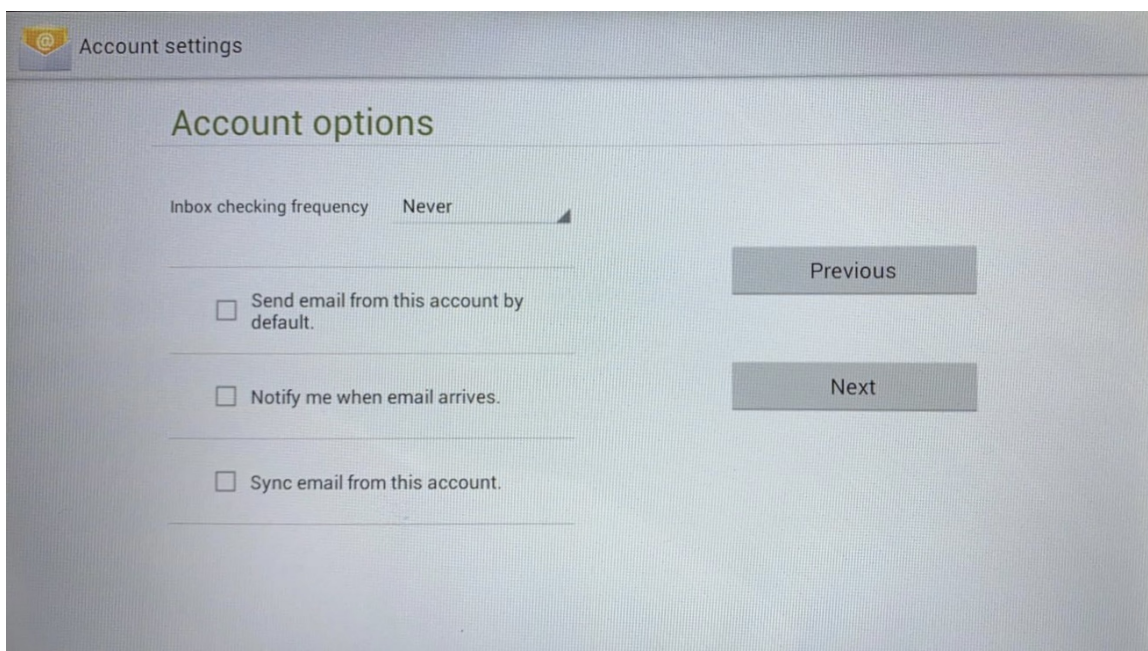
1. Go to the Email app. Enter the email address and password of the dedicated email you set up for the instrument. Then select Manual.
2. Select POP3, then input Incoming Server Information as shown below:



3. Input the Outgoing Server Information:



4. Set the Account Options.



5. Enter a name for your account.

Frequently Used Email Accounts

Use the Account app Address Book function to save frequently used recipient email addresses. This feature is accessed from the Overflow menu (three vertical dots) found at the top right of the main Accounts app screen.

Screen Captures or Data Via Email

- Select the Screen Capture or Export Selected Data function from the measurement app's Overflow menu.
Note: Measurement results may also be accessed at any time using the Data app.
- Select the Email option using the radio button selector.
- Use the drop-down menu next to the radio button to select an address already saved in the Address Book.
- Click the OK button on the bottom right to continue
- If the send-to email address has not been previously saved in the Address Book, simply click the OK button and enter the email address when the Email App screen appears.
- Enter a subject and message if desired and tap the Send button.

Summary

This document covers the legacy Android-based instruments. For more information on email setup for our Linux-based instruments, please see [205 Email Setup](#) or [contact DeNovix technical support](#) for other data export related questions.

For internet or server related issues, refer to your local IT support group for additional assistance. Outside of the US, contact your local distributor for support.

