

Camera Overlay Settings

These instructions assist KinExA® users with camera version 1.5 or 2.0 to correctly center and provide an optimal view of the flow cell. If you have version 1.0, these adjustments cannot be made.

Tips to make this procedure easier

- Have the KinExA Pro flow cell camera open while making all adjustments.
- Align the flow cell correctly.
- Charge beads so there are beads in view.

Goals

- The light should be centered between the top of the mesh screen of the flow cell and the “Min” line on the screen (between the arrows on **Figure 1**).
- Although not as crucial to function, the flow cell should be centered left to right for better function.

Protocol

1. Open a Mozilla or Google Chrome internet browser. (Internet Explorer does not work)
2. Type **192.168.0.9** into the tool bar then hit the **Enter** key.
3. Select **Parameter Editor**.
4. Select **WOI** or Window of Interest.
5. Scroll down and select the **View/Edit Current** button.

6. A sideways image of the flow cell will appear at the top of the screen (See **Figure 1**).

7. Determine the version of camera used by clicking on the **Tools** tab in KinExA Pro. Select **Options**, and the camera version type will be on the Instrument Controller page. Follow the instructions for your camera type:

• Camera Version 1.5

- Adjust the flow cell image up and down (to move the position of the light):
 - In the parameter labeled **WOI_Left** (red box in **Figure 1**) adjust the setting under the **dec** column.
 - Moves down when value is decreased
 - Moves up when value is increased
 - Click **APPLY** to update the current changes.
- Adjust the flow cell image left and right:
 - In the parameter labeled **WOI_Top** (red box in **Figure 1**) adjust the setting under the **dec** column.
 - Moves left when value is decreased
 - Moves right when value is increased
 - Click **APPLY** to update the current changes.

• Camera Version 2.0

- Adjust the flow cell image up and down (to move the position of the light):
 - In the parameter labeled **WOI_Left** (red box in **Figure 1**) adjust the setting under the **dec** column.
 - Moves up when value is decreased
 - Moves down when value is increased
 - Click **APPLY** to update the current changes.
- Adjust the flow cell image left and right:
 - In the parameter labeled **WOI_Top** (red box in **Figure 1**) adjust the setting under the **dec** column.
 - Moves right when value is decreased
 - Moves left when value is increased
 - Click **APPLY** to update the current changes.

8. Close the **Parameter for groups: woi** Tab.

9. In the Original Window, scroll down, and click **SAVE** in the next available numbered space.

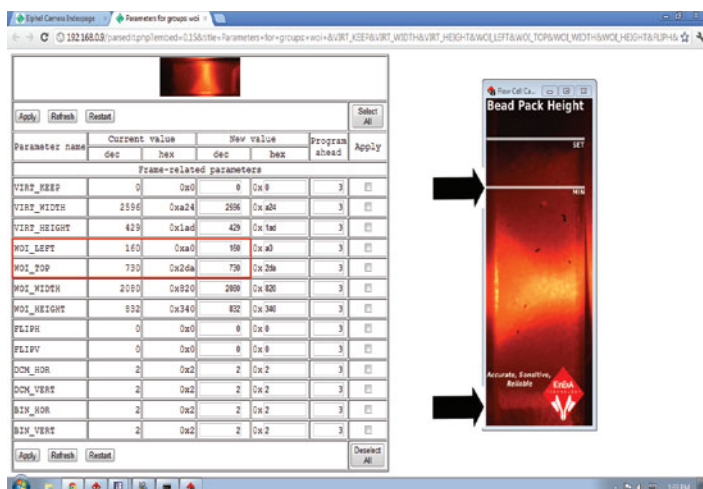


Figure 1.