

Combining and Analyzing Data Points

This file is helpful in instances where additional points are needed to fill in the experimental curve such as a manual Kinetics Direct experiment, or when an experiment has stopped or failed before completion.

Each experiment run will be in a separate file. The files need to be combined before the points can be analyzed. In the figures below, points are being added to a Standard Kinetics Direct experiment to fill in the top portion of the curve.

- Open the N-curve Analysis, in software version 4.0 or newer, and select the correct template for the experiment type from the drop down menu under *Analysis Method*. Use the **Add Experiment** button to add the first experiment to the N-curve (**Figure 1**). **Add Experiment** can also be found under *Edit* in the tool bar.

- Once the first experiment is added, use the **Add Experiment** button associated with Curve 1. Add all additional experiments or points (**Figure 2**).

- Once all additional points are added, select **Analyze** and the results will be seen under the *Binding Curve* tab (**Figure 3**).

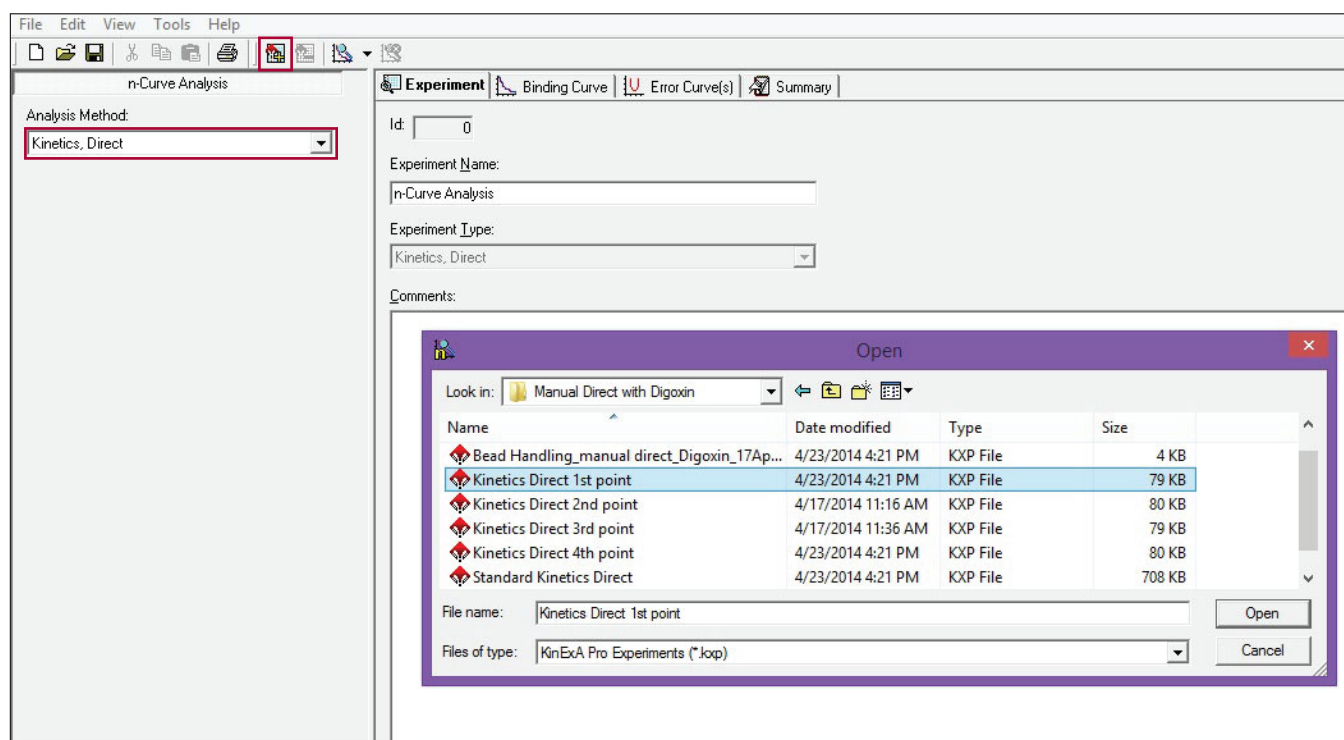


Figure 1. Adding the first time point to the Kinetics Direct N-curve.

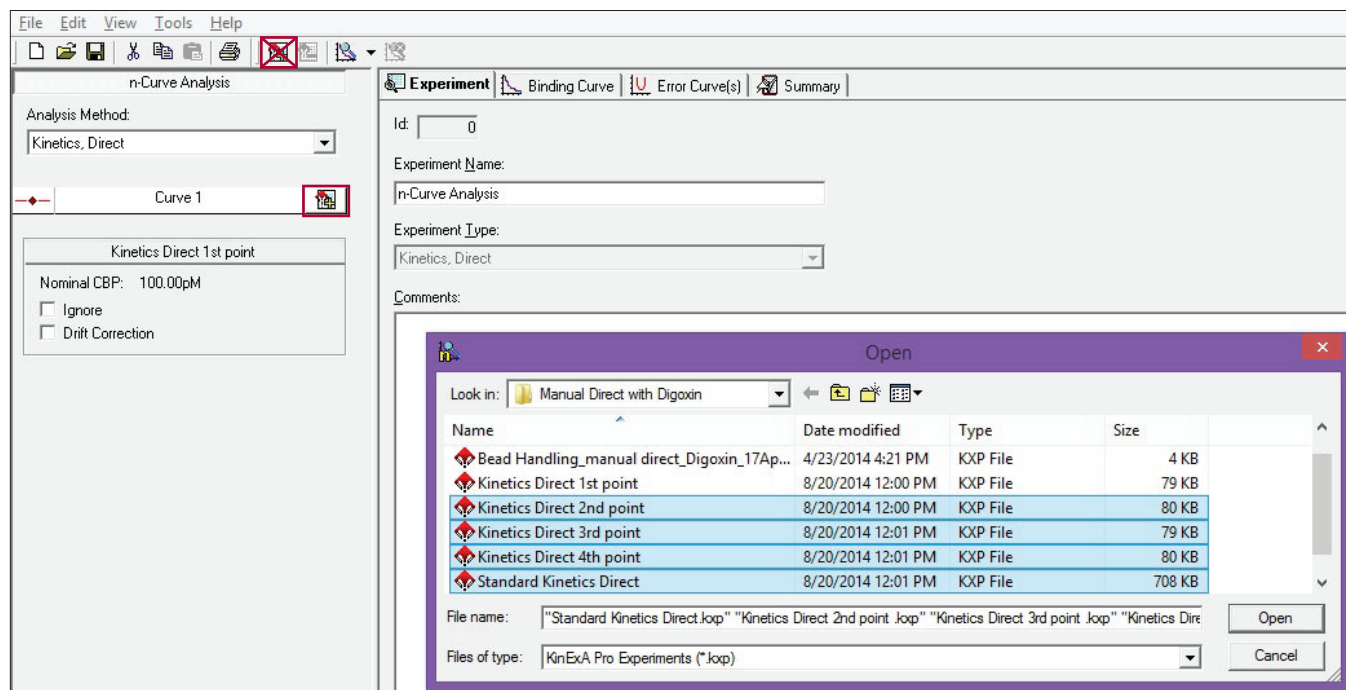


Figure 2. Using the Add Experiment button associated with Curve 1 to add all additional points.

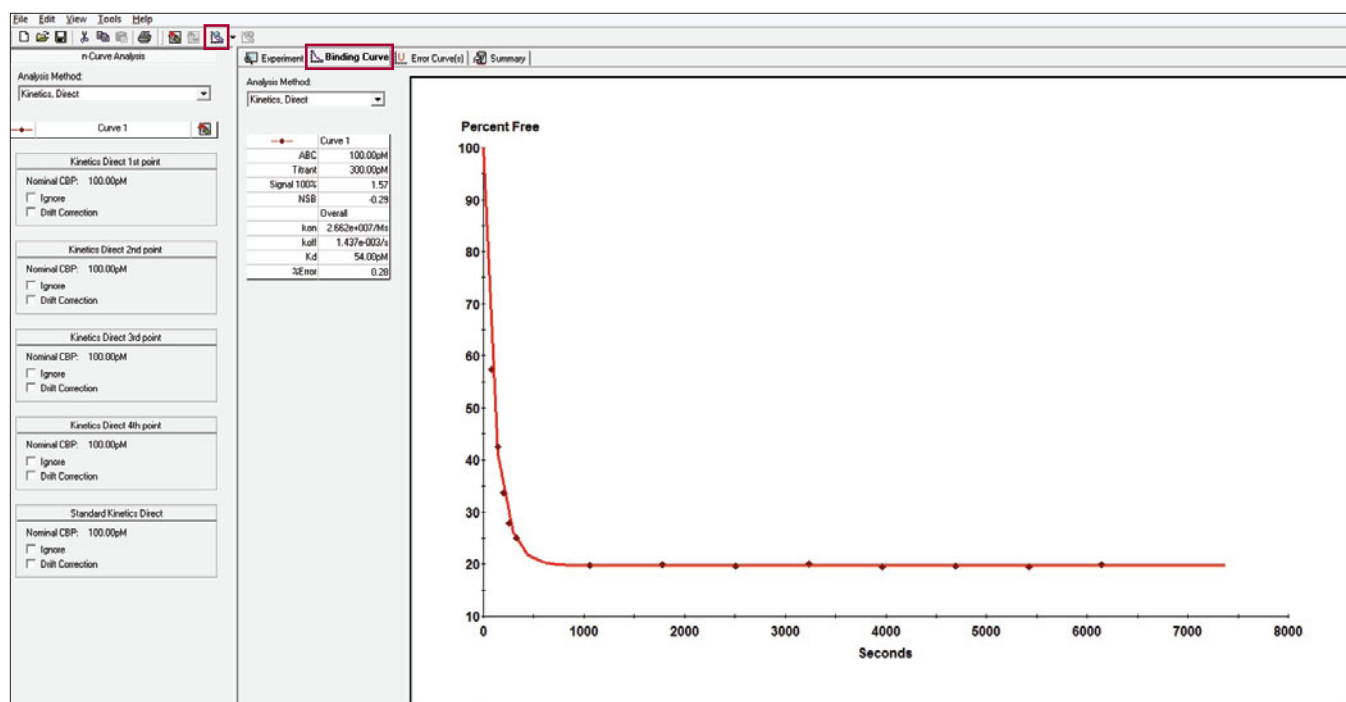


Figure 3. Results of combined Autosampler Manual Kinetics Direct and Standard Kinetics Direct.