



Tech Note 225

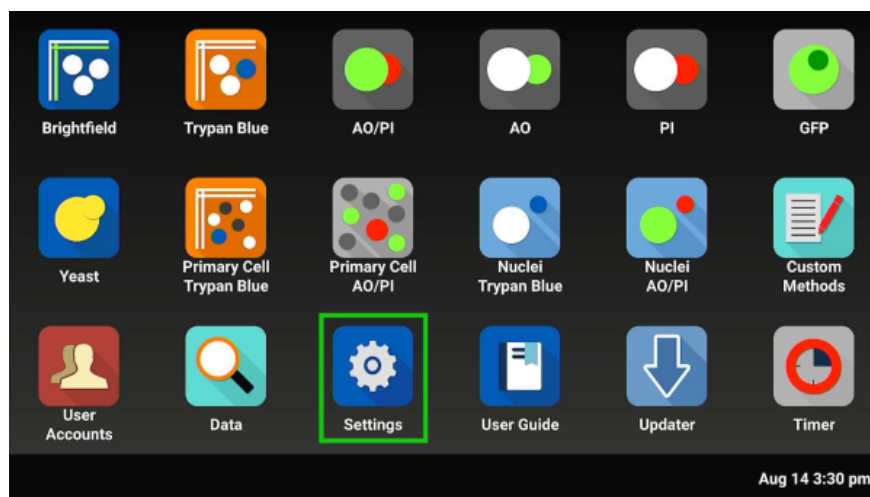
Connecting to eduroam

Introduction

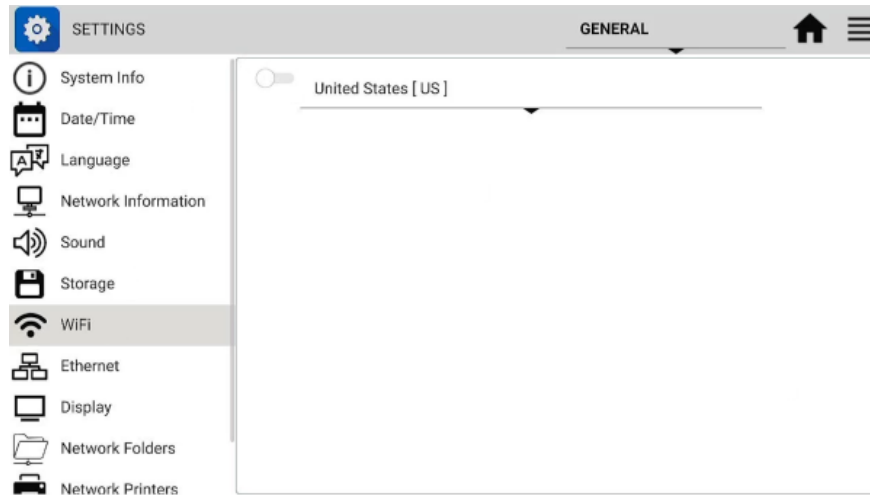
DeNovix instruments are compatible with eduroam using login credentials provided by your institution. Watch the video below, or follow the steps outlined in this technical note to connect to the eduroam network.

1. Settings

a. Open Settings app

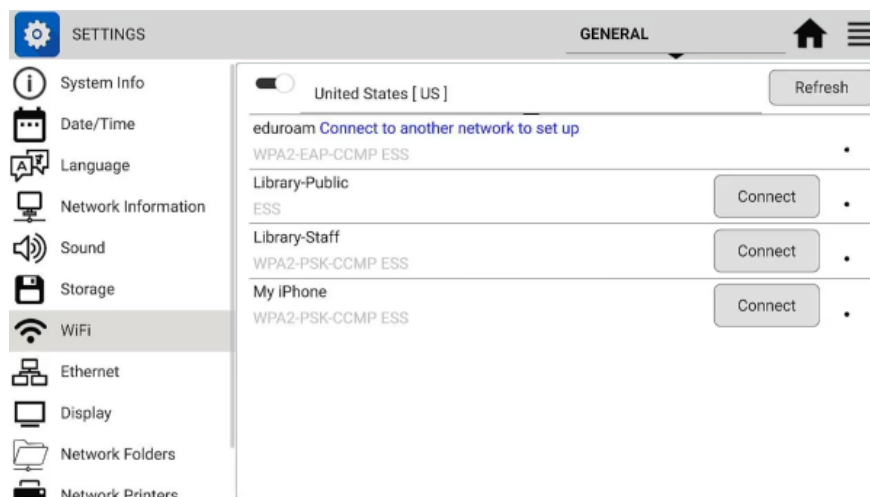


b. Navigate to the Wi-Fi tab



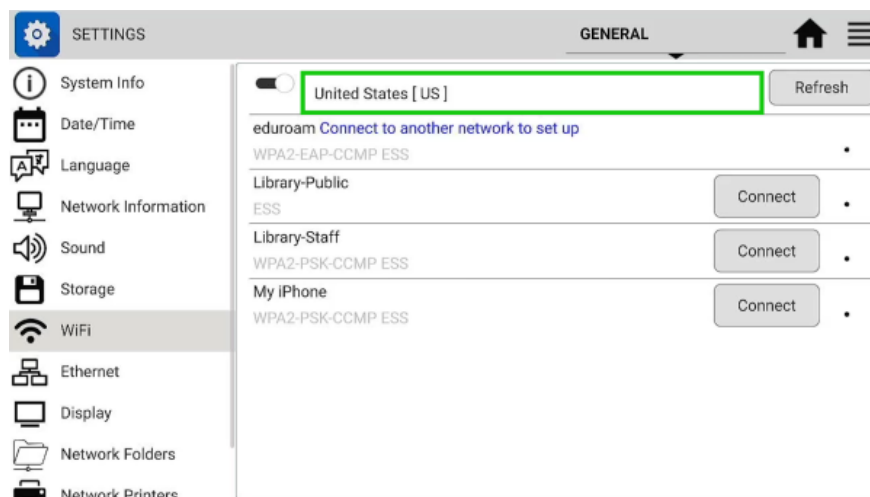
c. Turn on Wi-Fi.

Press “Refresh” if all expected SSIDs are not showing immediately.



d. Select Country

Use the dropdown at the top of the screen to select the country you are currently in. Wi-Fi frequencies are country specific and the correct country should be selected. If a new country is set, follow instructions and reboot the instrument.

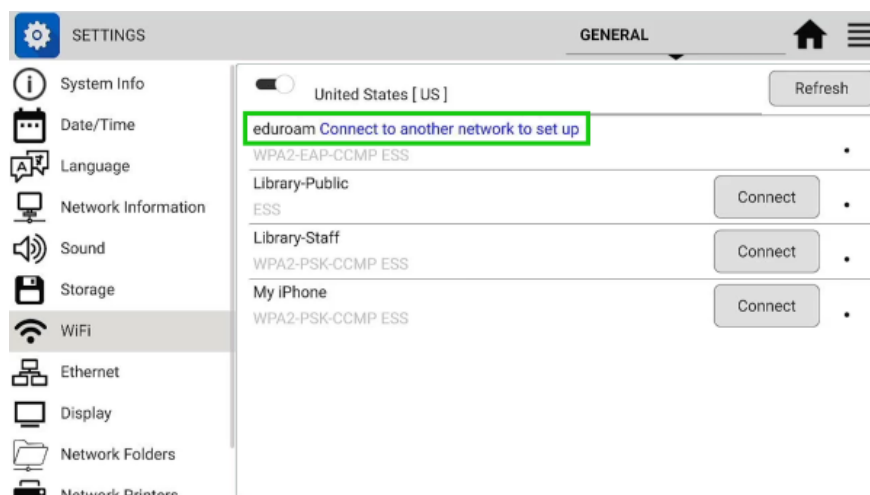


2. Connect to Wi-Fi

a. Connect to Network

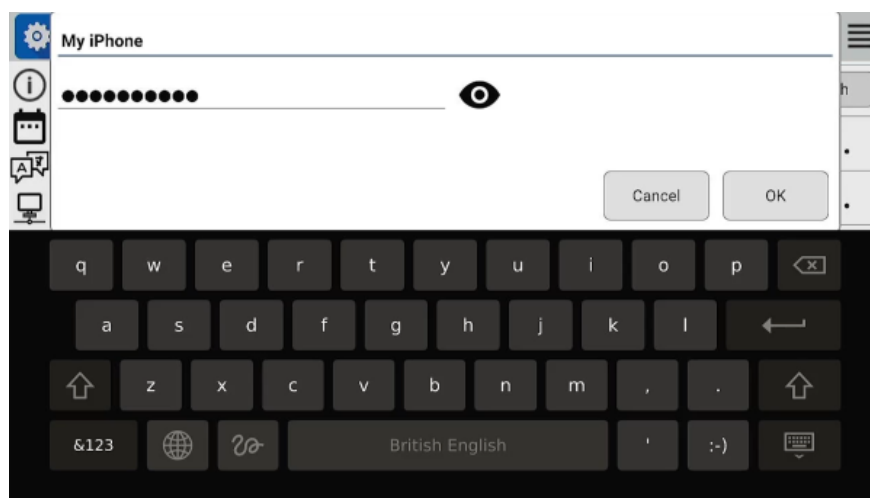
Select another network to connect to in order to download the eduroam installer

Note: Before eduroam can be set up, the instrument first must be connected to another network (hotspot, open Wi-Fi SSID, etc.)

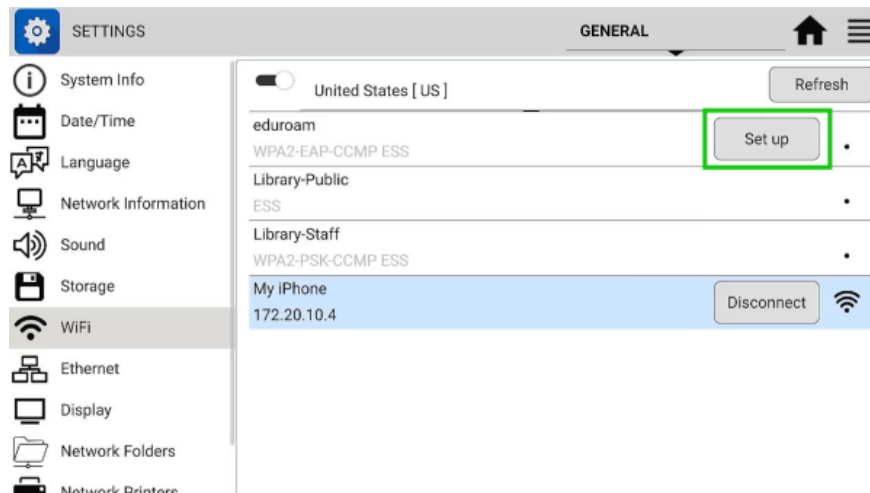


b. Enter Password / Accept Terms

Enter password and press “Ok” or accept the terms of an open Wi-Fi portal.



c. Button next to the eduroam SSID will now say “Set up”



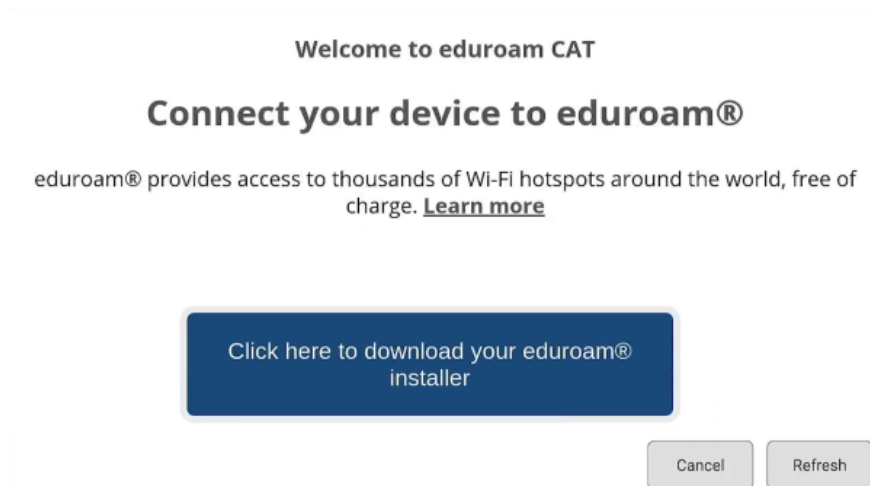
3. Download eduroam Installer

a. Press the “Set up”

Press the “Set up” button next to eduroam, and the eduroam webpage will open.

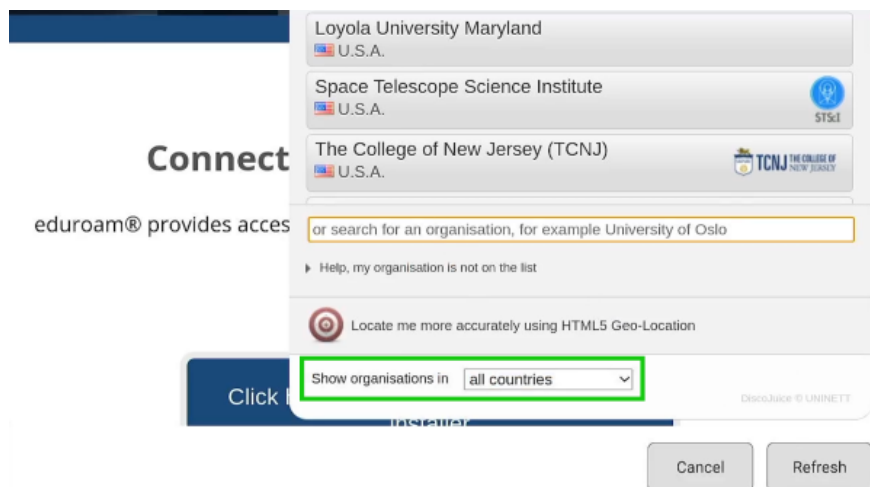
b. Navigate to Installer Page

Scroll to bottom and select “Click here to download your eduroam® installer”



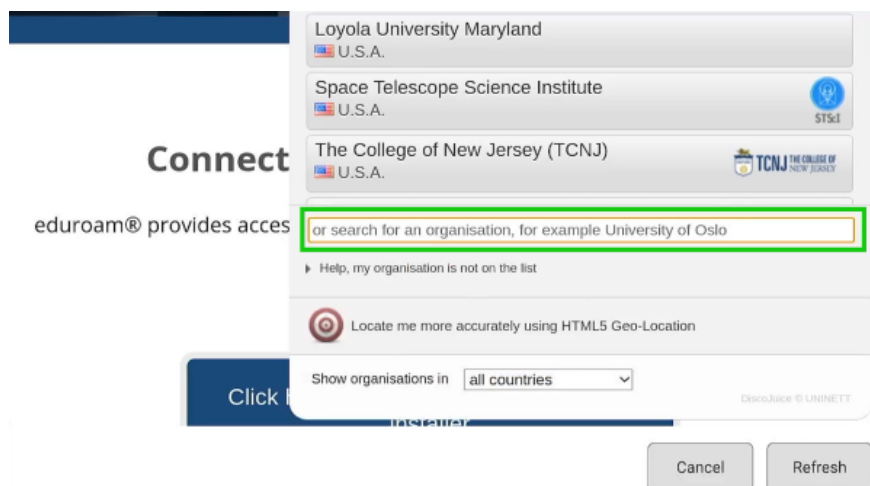
c. Choose Country

Under “Show organisations in...” select your country or “all countries”



d. Search for Institution

Note: If the institution does not appear, your university may have a custom installation of eduroam managed by a third party organization. Eduroam activation will not be possible unless the institution shows on the list of selections. The list of supported institutions can also be viewed at <https://cat.eduroam.org>.



e. Select Institution & Download

Select your institution and navigate to their page. Press the button to download the installer for Linux.

The screenshot shows the eduroam Configuration Assistant Tool. On the left, a sidebar displays 'eduroam® Install Linux all major distributions Custom built for your'. The main area shows a list of institutions: Stockton University (U.S.A.), eduroam Visitor Access Canada (Canada), eVA(UK) - eduroam Visitor Access UK (United Kingdom), eduroam Visitor Access (eVA) (Netherlands), eVA(CH) - eduroam Visitor Access Switzerland (Switzerland), and eduroam Visitor Access (ZA) (South Africa). Below this list are 'Cancel' and 'Refresh' buttons. The bottom section shows the selected institution, 'eVA(UK) - eduroam Visitor Access UK', with a 'select another' link. Below this, it says 'If you encounter problems you should ask those who gave you your account for help.' and 'Download your installer for Linux' with a penguin icon. There are two buttons: 'eduroam' and 'i'. At the bottom are 'Cancel' and 'Refresh' buttons.

f. Return to Settings

Instrument will automatically return to Settings once the download is complete

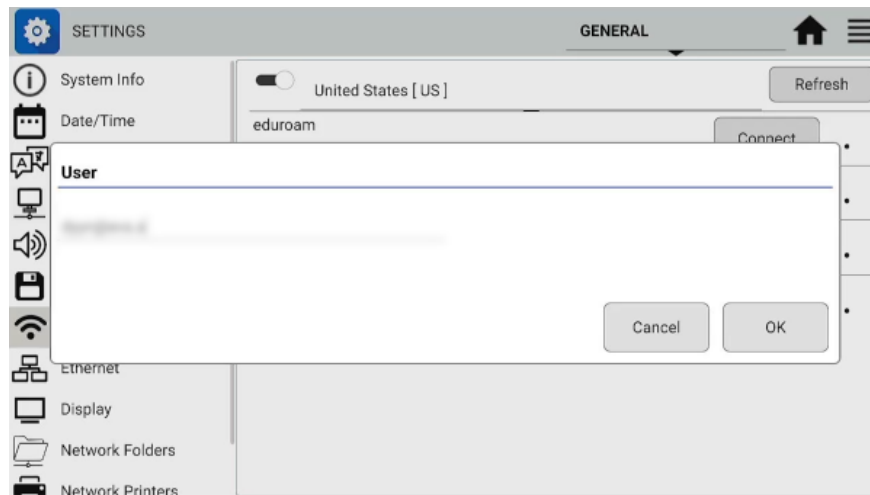
g. Button next to eduroam SSID will now say "Connect"

The screenshot shows the Settings app with the 'WiFi' section selected. The 'GENERAL' tab is active. A toggle switch for 'United States [US]' is at the top. Below it, a list of networks is shown: 'eduroam' (WPA2-EAP-CCMP ESS), 'Library-Public' (ESS), 'Library-Staff' (WPA2-PSK-CCMP ESS), and 'My iPhone' (WPA2-PSK-CCMP ESS). Each network has a 'Connect' button next to it. The 'Connect' button for 'eduroam' is highlighted with a green box. A 'Refresh' button is at the top right of the network list.

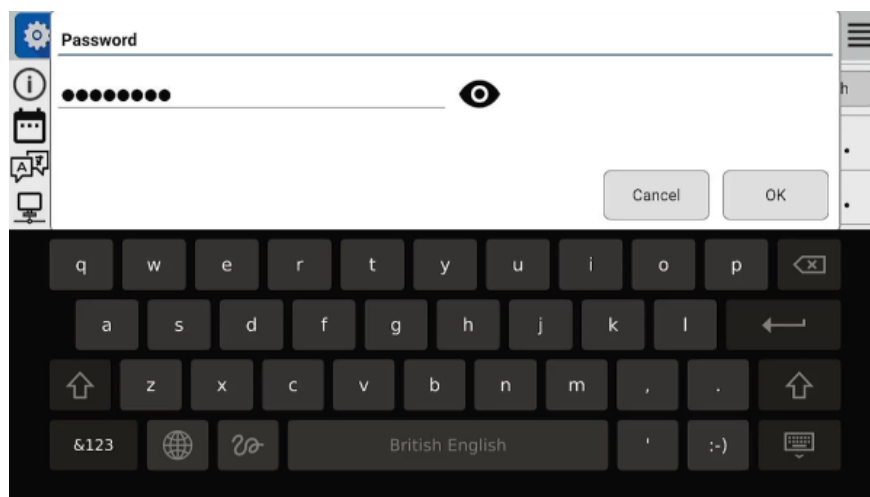
4. Connect to eduroam

a. Press the "Connect" button next to eduroam

b. Type in the username provided by your institution, then press "Ok"



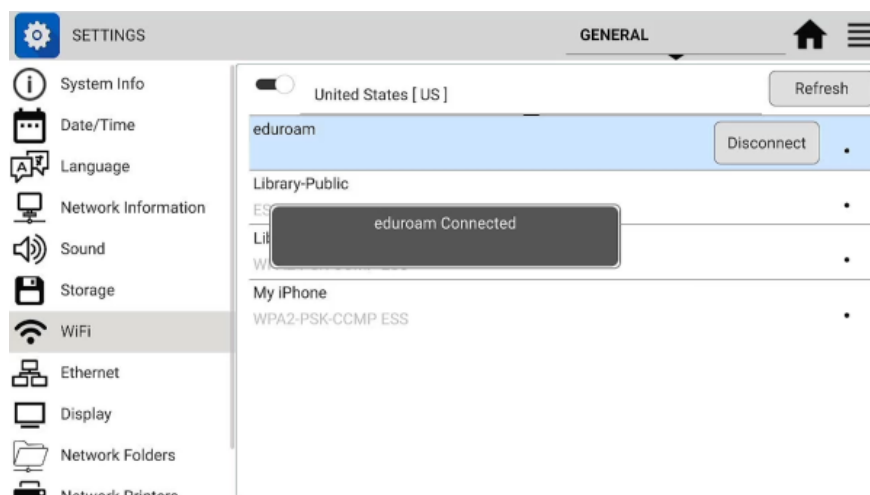
c. Type in the password provided by your institution, then press "Ok"



d. Confirmation Message

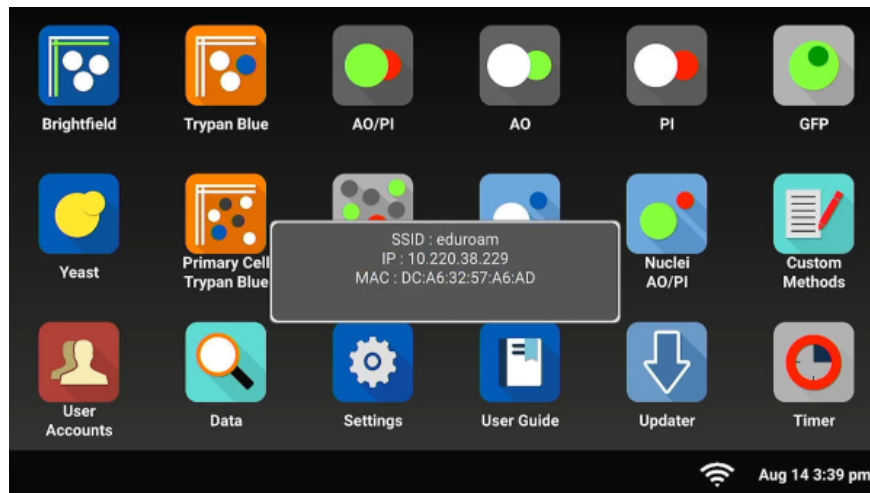
A confirmation message will appear to show that eduroam has been connected.

Note: If connection fails at this step, ensure that you have the correct login credentials from your institution.



e. Check Wi-Fi Icon

The Wi-Fi icon will appear on the bottom bar of the home screen. When pressed, it will show "SSID: eduroam" at the top



If you have any questions or are having trouble connecting, please contact our technical support team at techsupport@denovix.com.

10-OCT-2023

DeNovix Inc.
3411 Silverside Road
Wilmington, DE 19810, USA

Phone: +1.302-442-6911
Email: info@denovix.com
www.denovix.com

